

# TEMPRETRIEVER

## LOW COST REUSABLE TEMPERATURE DATA LOGGER

### Features

- Low cost
- Pushbutton start/stop
- LED alarm indication
- User selectable alarm limits
- Real-time operation
- Programmable start time
- Reusable
- Miniature size
- 38,400 baud offload speed
- CE Approved

### Applications

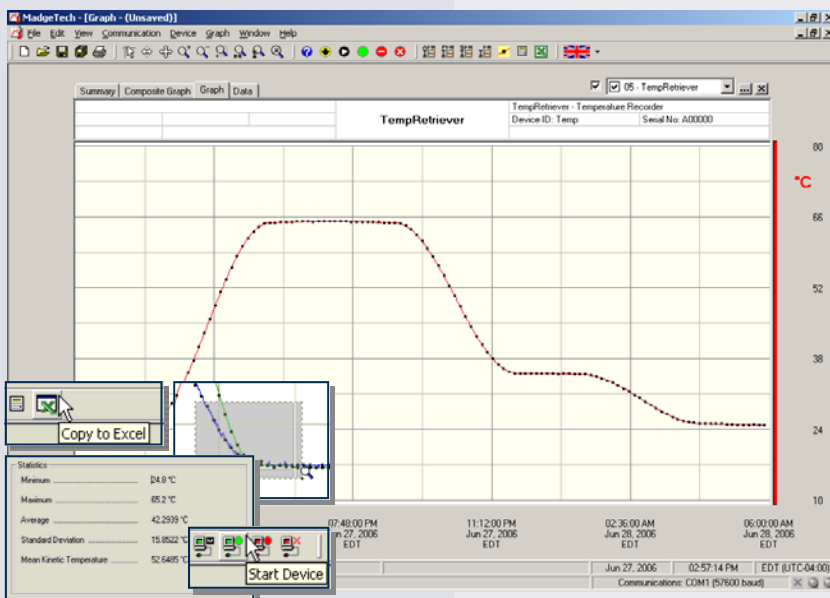
- Record temperature of perishable goods in transit
- Warehouse monitoring
- HVAC
- Medical and Pharmaceutical
- Museum monitoring
- Environmental studies
- Replace costly strip chart recorders
- Implement HACCP programs



The TempRetriever is a low cost, reusable temperature recording device which allows for a myriad of applications. The device excels in dry applications such as shipping, museums, R&D, warehouses and HVAC. It boasts an accuracy of  $\pm 0.5^{\circ}\text{C}$  and a resolution of  $0.1^{\circ}\text{C}$ . The TempRetriever can store up to 16,383 readings in its non-volatile memory and coupled with up to a one year battery life and LED alarm indication makes this a perfect temperature recorder when keeping costs down is paramount.

The MadgeTech software includes a full host of features that allows the user to set the start method (i.e. pushbutton, delayed start or start now), the start date and time, sample rate, high/low alarm limits, 6-character device ID and a 16-character extended ID. Data can be offloaded and displayed in  $^{\circ}\text{C}$ ,  $^{\circ}\text{F}$ , K and  $^{\circ}\text{R}$ . The software will also automatically calculate Mean Kinetic Temperature as well as other useful statistics to simplify analysis. For additional custom analysis, the data can be quickly exported into a MS Excel<sup>®</sup> spreadsheet with the click of a button.

Industries such as education, research, and perishable goods transport will all benefit from the remarkable value this device represents.



### MadgeTech Data Recorder Software

displays temperature data in an easy to use graph.

The Windows<sup>®</sup>-based software package allows the user to effortlessly collect, display and analyze data. A variety of powerful tools allow you to examine, export, and print professional looking data with just a click of the mouse.

Click [MadgeTech Software](#) for more information or to download the software.

## TEMPRETRIEVER SPECIFICATIONS\*

<b>Temperature Sensor:</b> Semiconductor	<b>Calibration:</b> Digital Calibration through software
<b>Temperature Range:</b> -40 to +80°C	<b>Calibration Date:</b> Automatically recorded within device
<b>Temperature Resolution:</b> 0.1°C	<b>Battery Type:</b> 3.6 V lithium battery included, <b>user replaceable</b>
<b>Calibrated Accuracy:</b> ±0.5°C (0 to +50°C)	<b>Battery Life:</b> 1 year typical @ 25°C, 1 minute reading rate
<b>Alarm:</b> Programmable high and low limits; when logged exceeds either limit, red LED blinks every 3 seconds	<b>Data Format:</b> Date and time stamped °C, °F, K, °R
<b>Activity Indicator:</b> Green LED blinks every 15 seconds to indicate device has been started	<b>Time Accuracy:</b> ±1 minute/month (at 20°C, RS232 port not in use)
<b>Start Modes:</b> Software programmable immediate start or delay start up to six months in advance; or external pushbutton start/stop	<b>Computer Interface:</b> PC serial or USB (interface cable required); 38,400baud
<b>Real Time Recording:</b> May be used with PC to monitor and record data in real-time	<b>Software:</b> Windows 95/98/ME/NT/2000/XP/Vista based software
<b>Memory:</b> 16,383 readings	<b>Operating Environment:</b> -40 to +80°C, 0 to 95%RH non-condensing
<b>Reading Rate:</b> 5 seconds to 30 minutes	<b>Dimensions:</b> 1.4" x 2.2" x 0.6" (36mm x 56mm x 16mm)
	<b>Weight:</b> 0.8 oz (23 g)
	<b>Materials:</b> ABS plastic
	<b>Approvals:</b> CE

**BATTERY WARNING:** FIRE, EXPLOSION, AND SEVERE BURN HAZARD. DO NOT RECHARGE, DISASSEMBLE, HEAT ABOVE 212°F, INCINERATE OR EXPOSE CONTENTS TO WATER.

## SOFTWARE FEATURES

<b>Multiple Graphs:</b> Simultaneously analyze data from several units or deployments; easily switch to a single data series	<b>Statistics:</b> Calculate averages, min, max, standard deviation, and mean kinetic temperature with the touch of a button
<b>Real-Time Recording:</b> Collect and display data in real-time while continuing to log	<b>Export Data:</b> Export data in a variety of common formats, or switch to Excel® with a single click
<b>Graphical Cursor:</b> One click displays readings by time, value, parameter or sample number	<b>Calibration:</b> Automatically calculate and store calibration parameters
<b>Data Table:</b> Instantly access tabular view for detailed dates, times, values, and annotations	<b>Logger Configuration:</b> Easy set up and launch of data loggers with immediate or delayed start, preferred sample rate, and device ID
<b>Scaling Options:</b> Autoscale function fits data to the screen, or allows user to manually enter their own values	<b>Communications:</b> Automatically sets up communications port, or lets user select configuration
<b>Formatting Options:</b> Change colors, line styles, plotting options, show or hide channels quickly	<b>Printing:</b> Automatically print graphical or tabular data

\*SPECIFICATIONS ARE SUBJECT TO CHANGE WITHOUT NOTICE. SPECIFIC WARRANTY AND REMEDY LIMITATIONS APPLY. CALL 1-603-456-2011 OR GO TO WWW.MADGETECH.COM FOR DETAILS.

## ORDERING INFORMATION

<u>Model</u>	<u>Description</u>	<u>Price (U.S.)</u>
TEMPRETRIEVER	Low Cost, Reusable, Temperature Recorder	\$39.00
IFC110	Software, manual and RS232 interface cable	\$99.00
IFC200	Software, manual and USB interface cable	\$119.00
NIST	N.I.S.T. Calibration Certificate	Call for Pricing
LTC-7PN	Replacement battery for TempRetriever	\$10.00
SVP-Secure	Protocols for validating the 21 CFR Part 11 ready, secure data logging system	\$600.00
SVP-Secure License	License for MadgeTech SVP-Secure Software (unlimited users, license per computer)	\$1000.00

### ASK ABOUT OUR OTHER DATA RECORDERS

Temperature	Pulse/Event/State
Humidity	Low Level Current
Pressure	Low Level Voltage
pH	RF Transmitters
Level	Intrinsically Safe
Shock	Spectral Vibration
LCD Display	



For Quantity Discounts call 603-456-2011 or email [sales@madgetech.com](mailto:sales@madgetech.com)

PO Box 50 · Warner, NH 03278 · Phone: (603) 456-2011 · Fax: (603) 456-2012

DOC-1018009-00 REV G 2009.02.25